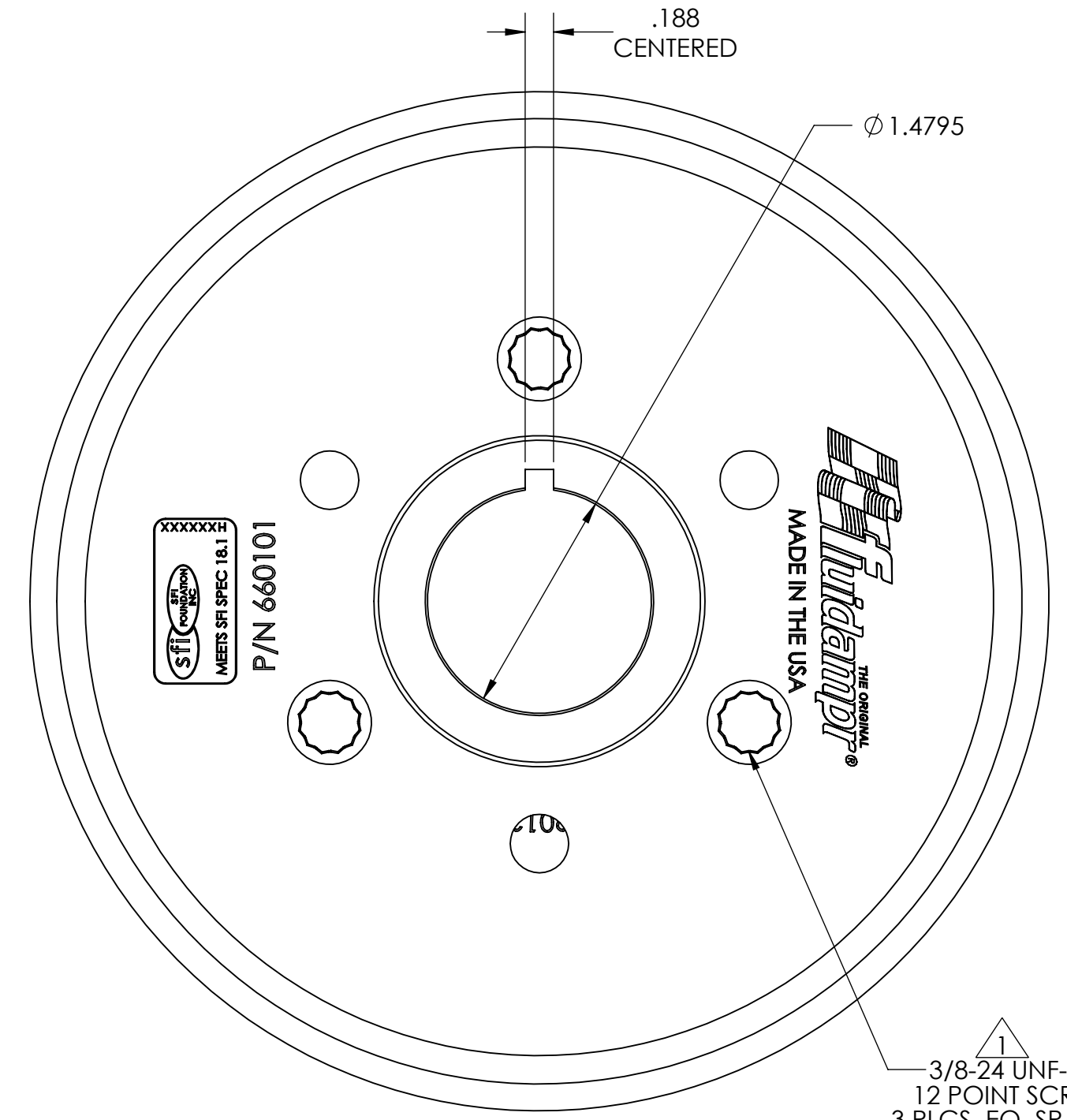
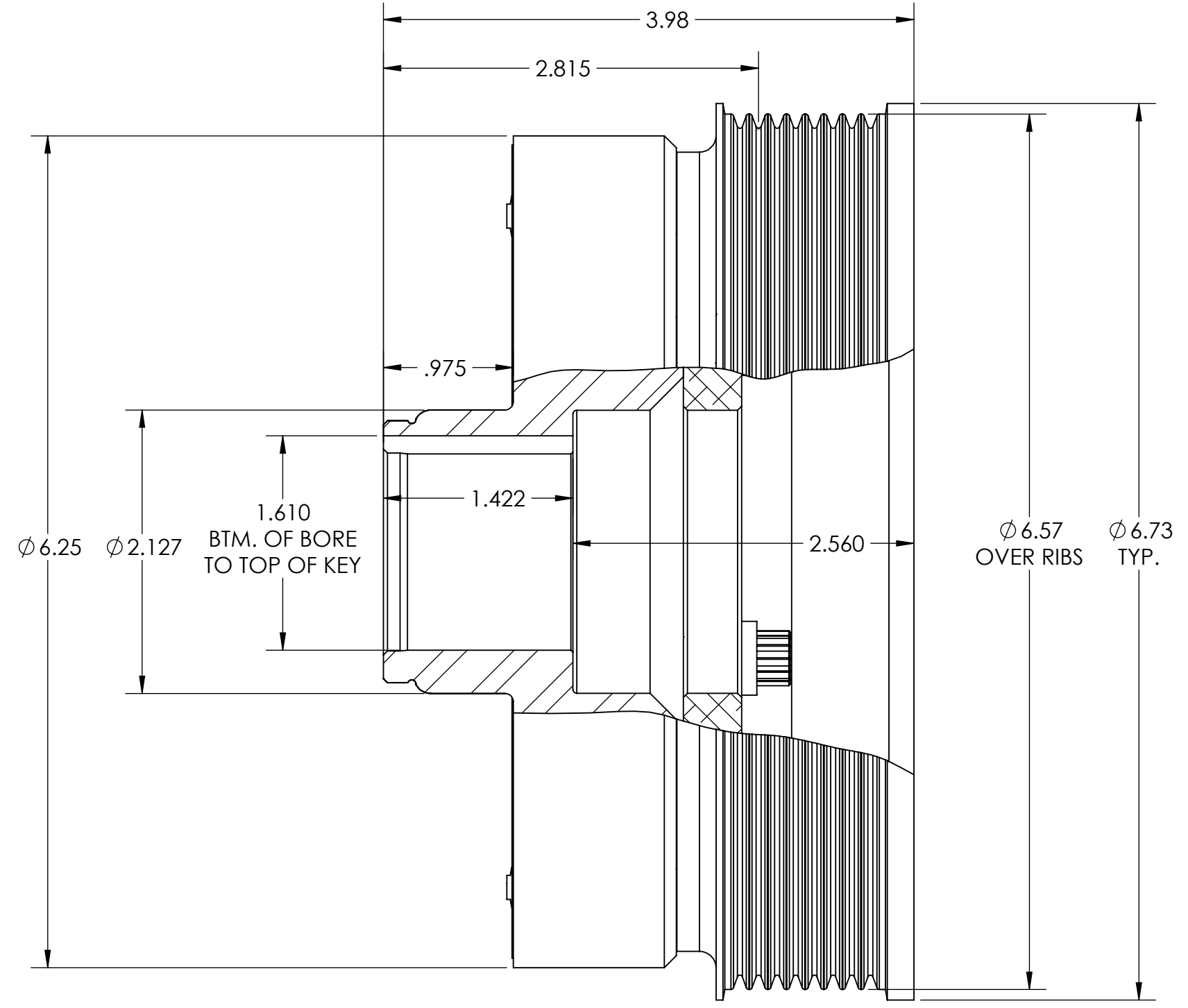
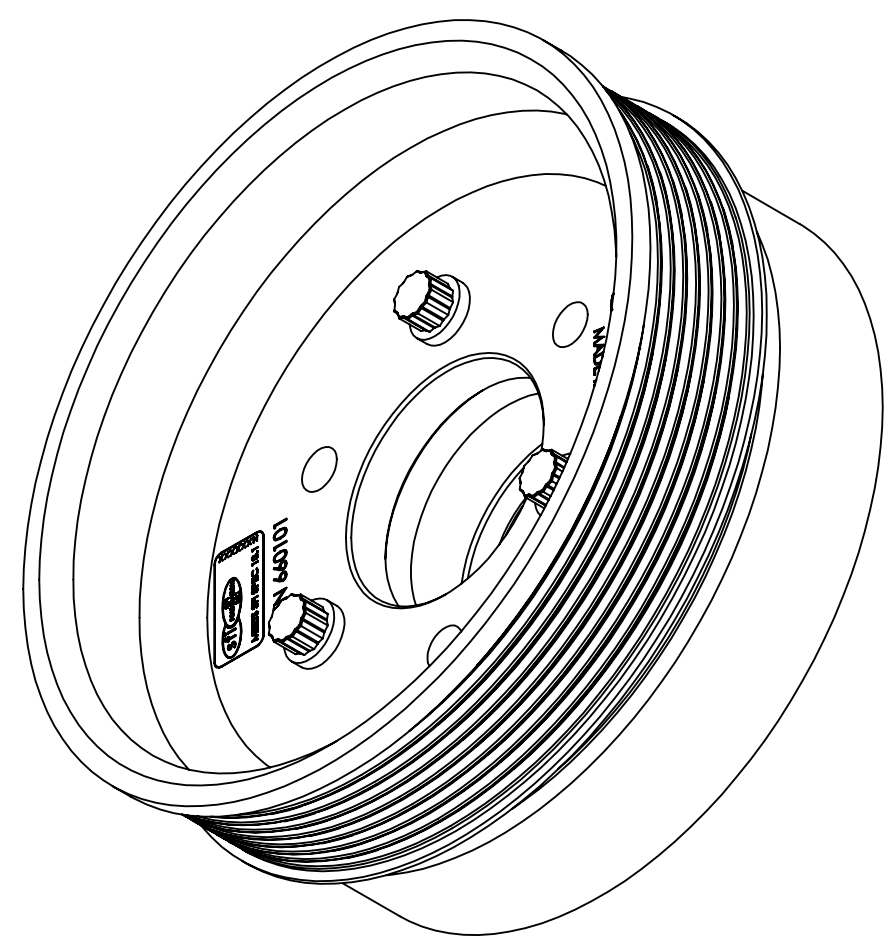


REVISIONS		
REV.	DESCRIPTION	DATE
A	ECN#23162	7/2/24



1  
3/8-24 UNF-2B  
12 POINT SCREW  
3 PLCS. EQ. SPACED  
ON Ø 3.200 B.C.  
TO ATTACH PULLEY  
TO DAMPER RING



NOTE:  
1 TORQUE BOLTS TO 37 FT-LBS. USING RED LOCTITE.

<b>APPLICATION:</b>		
LSX (WITH PULLEY)		
INTERNALLY BALANCED		
<b>PROPRIETARY AND CONFIDENTIAL</b>		
THE INFORMATION CONTAINED IN THIS DRAWING IS THE SOLE PROPERTY OF VIBRATECH TVD. ANY REPRODUCTION IN PART OR AS A WHOLE WITHOUT THE WRITTEN PERMISSION OF VIBRATECH TVD IS PROHIBITED.		
FINAL	LSX	
NEXT ASSY	USED ON	
APPLICATION		

FINISH:  
DAMPER: BLACK ZINC CHROMATE  
PULLEY: BLACK ANODIZE  
COMMENTS:  
**ORDER PART #**  
660101

<b>VIBRATECH TVD</b> 180 ZOAR VALLEY ROAD, SPRINGVILLE, NEW YORK 14141 USA		
TITLE: <b>LS TROPHY TRUCK</b>		
SIZE <b>C</b>	DWG. NO. <b>660101-C</b>	REV <b>A</b>
WEIGHT: 10.1 LBS		SHEET 1 OF 1