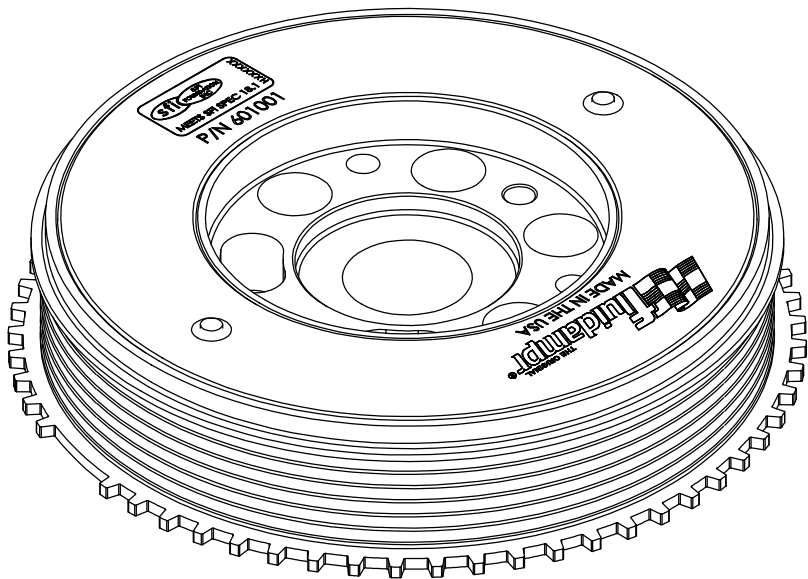
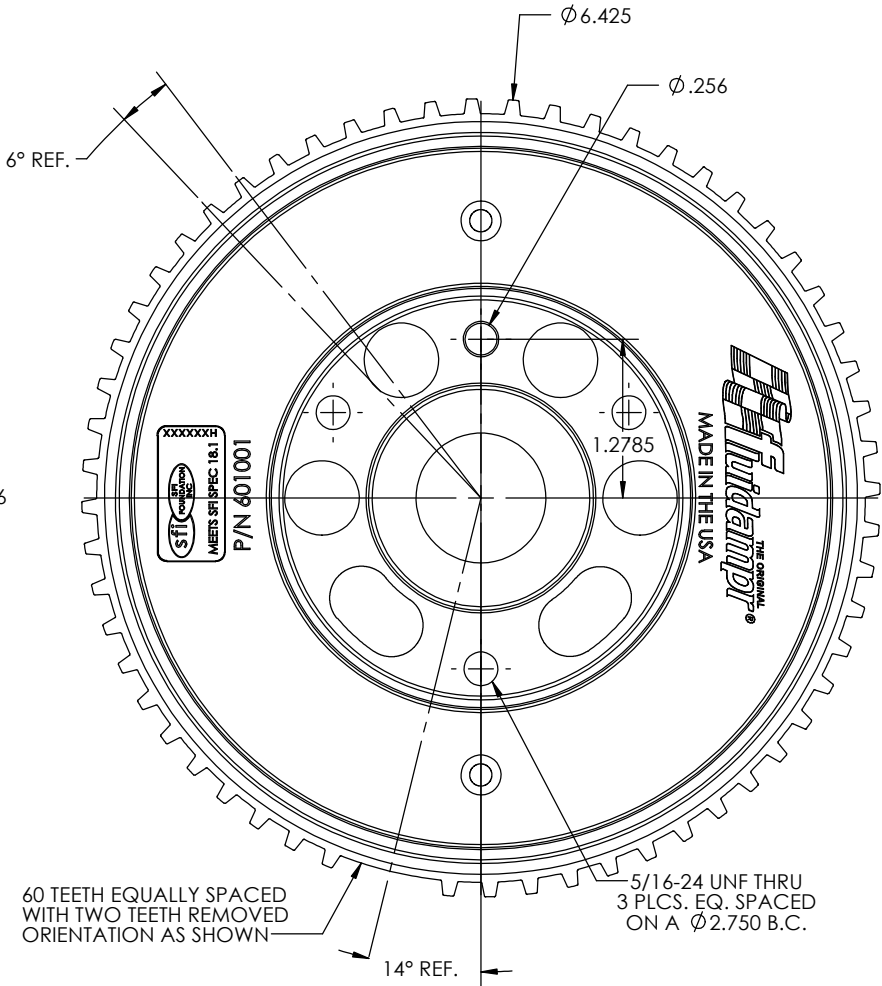
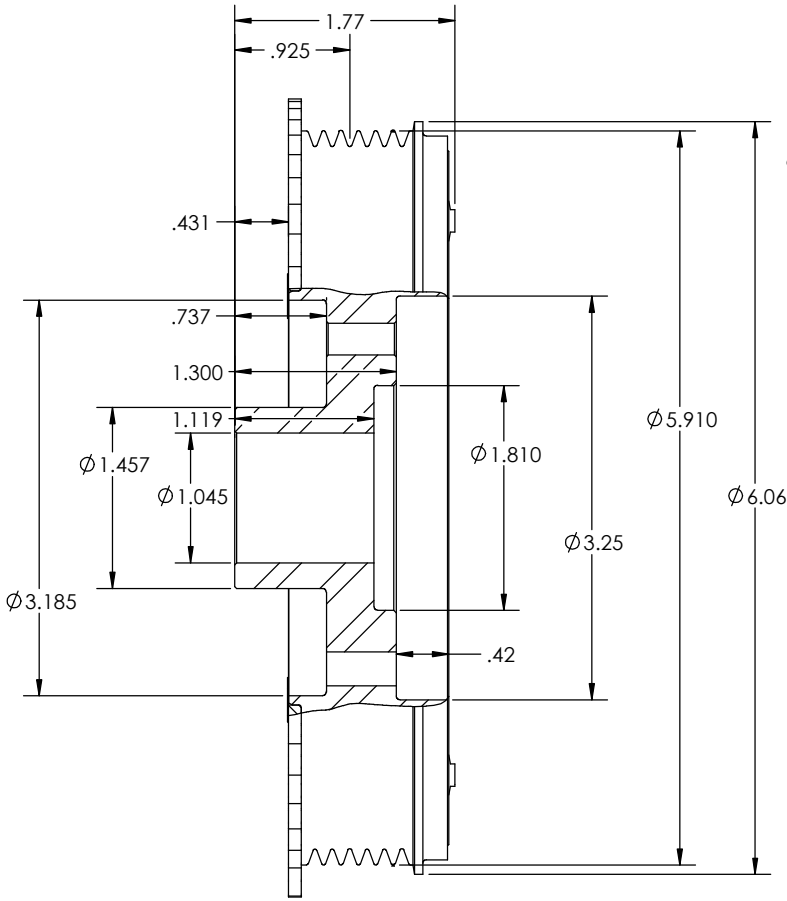
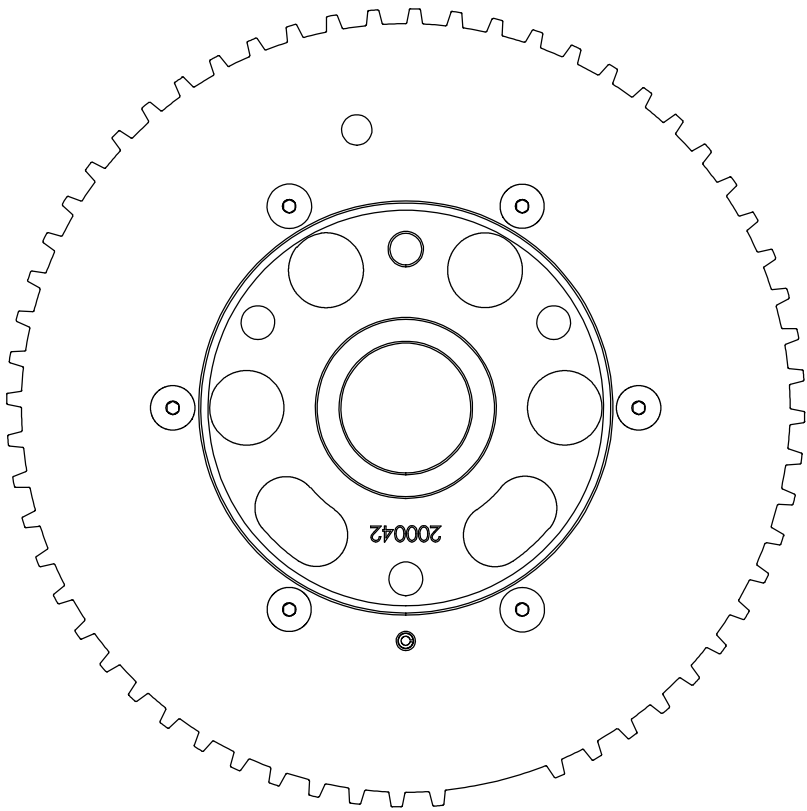


REVISIONS		
REV.	DESCRIPTION	DATE
A	ECN #23035	6/21/23



NOTES:

TORQUE (6) 8-32 F.H.C.S TO 25 LB.-IN. USING RED LOCTITE.

APPLICATION:			
MAZDA			
2.3L/2.5L TURBO MZR			
INTERNALLY BALANCED			
PROPRIETARY AND CONFIDENTIAL			
THE INFORMATION CONTAINED IN THIS DRAWING IS THE SOLE PROPERTY OF VIBRATECH TVD. ANY REPRODUCTION IN PART OR AS A WHOLE WITHOUT THE WRITTEN PERMISSION OF VIBRATECH TVD IS PROHIBITED.			
FINAL	MAZDA MZR 2.3L TURBO		
NEXT ASSY	USED ON		
APPLICATION			

FINISH: BLACK ZINC CHROMATE

COMMENTS:

ORDER PART # 601001

VIBRATECH TVD		
180 ZOAR VALLEY ROAD, SPRINGVILLE, NEW YORK 14141 USA		
TITLE:		
6" DIA. MAZDA MZR		
SIZE	DWG. NO.	REV
C	601001-C	A
WEIGHT: 7.0 LBS		SHEET 1 OF 1