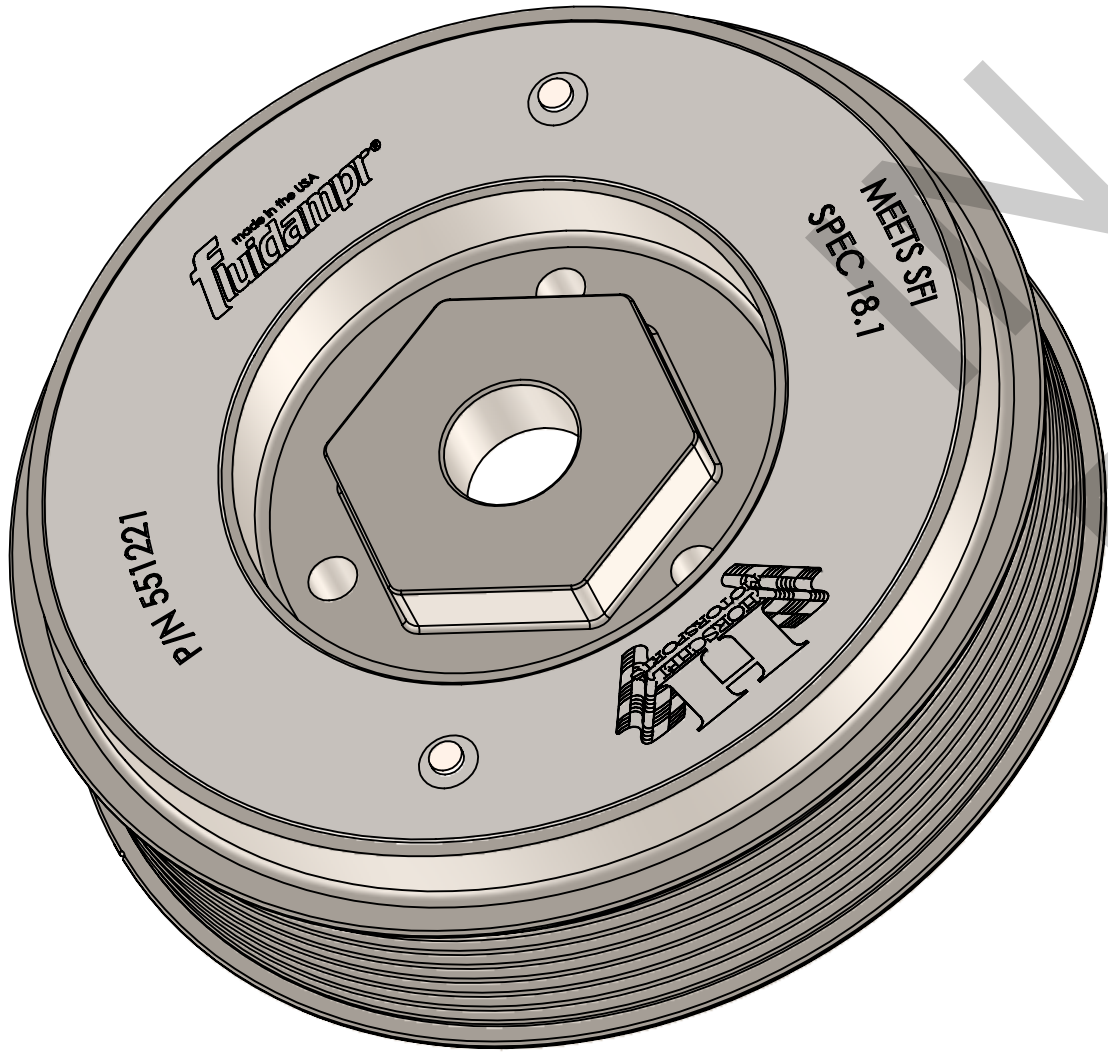
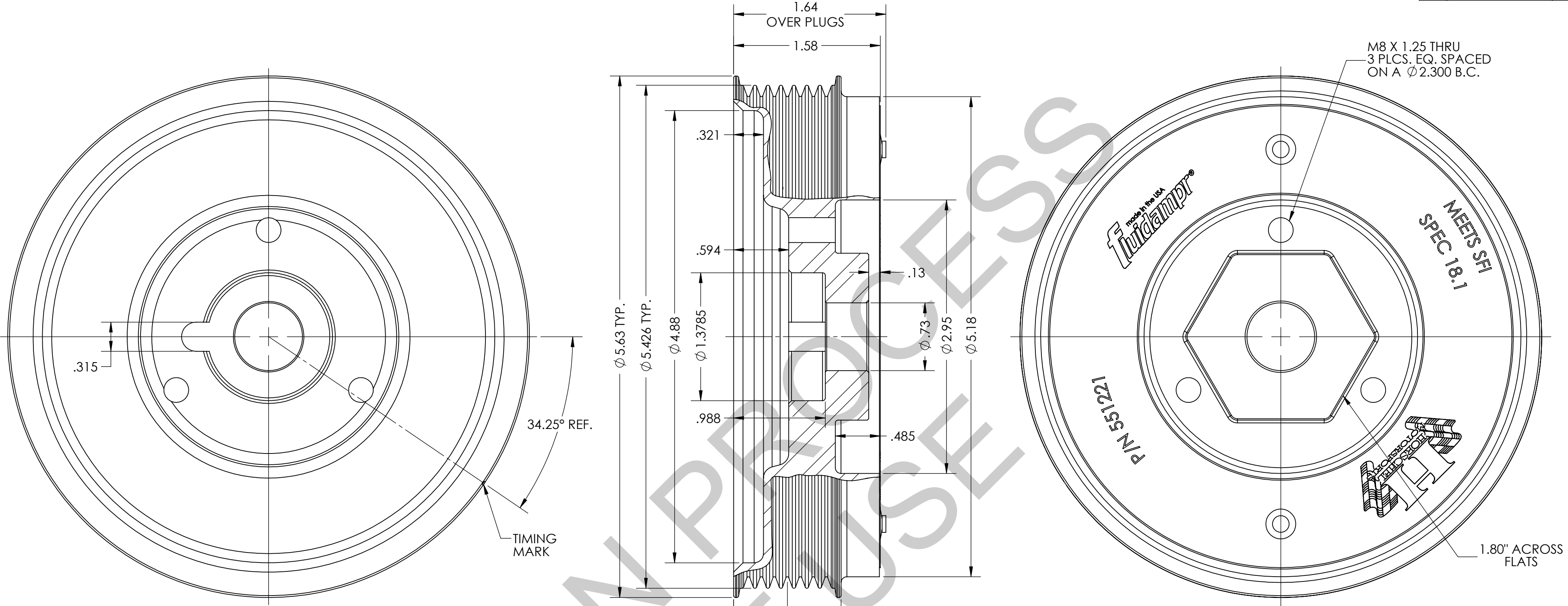
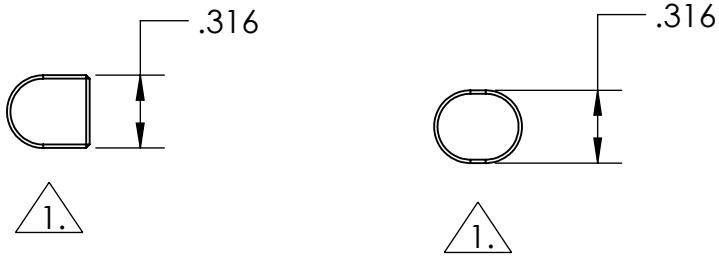


REVISIONS		
REV.	DESCRIPTION	DATE
00	ECN #11123	7/12/12
A	ECN #13005	1/29/13
B	ECN #13043	3/29/13



NOTES:

1. INSTALL KEY TO MATCH CRANKSHAFT CONFIGURATION



APPLICATION: VOLKSWAGEN/AUDI VR6			
INTERNALLY BALANCED			
PROPRIETARY AND CONFIDENTIAL			
THE INFORMATION CONTAINED IN THIS DRAWING IS THE SOLE PROPERTY OF VIBRATECH TVD. ANY REPRODUCTION IN PART OR AS A WHOLE WITHOUT THE WRITTEN PERMISSION OF VIBRATECH TVD IS PROHIBITED.			
FINAL	VW/AUDI VR6		
NEXT ASSY	USED ON		
APPLICATION			

FINISH: BLACK ZINC CHROMATE	
COMMENTS:	
ORDER PART # 551221	

VIBRATECH TVD 180 ZOAR VALLEY ROAD, SPRINGVILLE, NEW YORK 14141 USA		
TITLE: 5 5/8" DIA. VW/AUDI VR6		
SIZE C	DWG. NO. 551221-C	REV B
WEIGHT: 6.1 LBS SHEET 1 OF 1		